

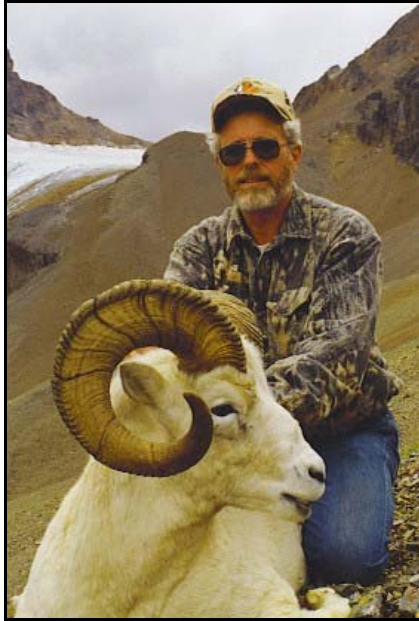


Alaska Hunting Safaris

November - March: (954) 783-5659
April - October: (907) 373-4658
Cellular: (907) 232-5819

www.alaskahunting safaris.com
rick@alaskahuntingsafaris.com

Rick Herscher



Brooks Range Dall Sheep

The Brooks Range is without doubt the best area in Alaska for sheep hunting. It is Alaska's last frontier and much less crowded than other Alaskan hunting areas. You will find more old, mature rams here than from other areas in Alaska.

Rams from this area grow old!

WHEN, WHERE & HOW TO GET THERE

This hunt originates from Galbraith Lake, on the Northeast slopes of the range, where hunters are met and transported to the hunting camp.

Guests fly to Fairbanks, Alaska, rest and motel. The next day fly on to Galbraith lake with Wright Air Service from Fairbanks International Airport. Generally you will fly on to the hunting camp the same day.

Hunting season is August 10-September 20th. The area is North of the Arctic Circle so we like to book our sheep only hunters on the first two hunts in August as weather can be unpredictable after September. Clients wishing to take Grizzly must plan on hunting into September.





WEATHER

Temperatures can run from 45-70 degrees in August, averaging 55 or 60 degrees. It is a fairly dry area but some rain can be expected. After early September the weather can be unpredictable, it can snow or freeze-up anytime. This is not so bad for Grizzly or Caribou, but can be a problem on a sheep hunt.

THE HUNT

Clients will fly into spike camps where sheep population surveys have been done via air surveys. In August it barely gets dark, expect very long days hunting, climbing and glassing. Hunters should be in good physical condition and be able to carry a 20 or 25 pound back pack with lunches, binoculars, gear and raingear.

The spike-camps are high quality mountain tents or "Bomb Shelters". They are warm, clean and dry but



11 DAY ITINERARY

- | | |
|-----------|---|
| Day 1 | Arrive in Fairbanks and rest, motel. |
| Day 2 | Fly to Galbraith Lake via Wright Air Service where you'll be met by your Guide and flown to the hunting camp. |
| Days 3-10 | Eight day hunt. |
| Day 11 | Return to Galbraith Lake and on to Fairbanks. |

APPLICABLE FEES

Dall Sheep 8 day hunt

Sheep/Grizzly 14 day hunt

Caribou, if taken

Bush flight Galbraith Lake to hunting camp

Sheep Tag

Grizzly Tag

For current fees openings and complete details please contact Rick

GOOD HUNTING!

Rick Herscher

Contact Information

Please contact us regarding our Marco Polo Sheep hunts, or other hunts for trophy Snow Sheep, Ibex, Asian Elk, Kamchatka Moose and Brown Bear, or Alaska Caribou or Brown Bear.

November - March

Alaska Hunting Safaris
2637 E. Atlantic Blvd., PMB # 122
Pompano Beach, FL 33062
Phone (954) 783-5659
FAX (954) 782-9723
Cell (907) 232-5819

April - October

Alaska Hunting Safaris
6140 W. Full Curl Ave.
Wasilla, AK 99654
Phone (907) 373-4658
FAX (954) 373-4613
Cell (907) 232-5819

Email: RickHerscher@AOL.com



Copyright © 2003, Alaska Huntings Safaris - Rick Herscher, Ltd. All rights reserved.



Alaska Hunting Safaris

Worldwide Hunts

Rick Herscher, Ltd.

We talk hunting. All inquiries are welcomed.